



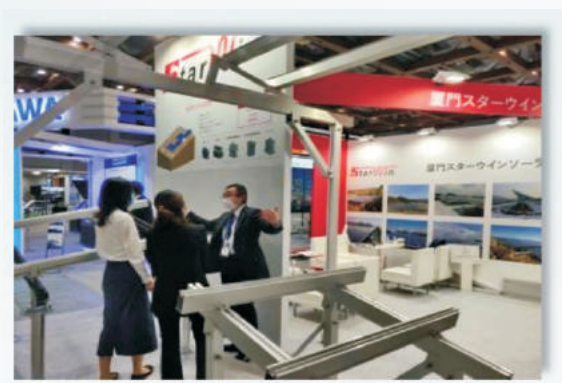
XIAMEN STARWIN SOLAR TECHNOLOGY CO.,LTD.
XIAMEN STARWIN COMMERCE AND TRADE CO.,LTD.

Company Profile Positive, Energetic

Xiamen Starwin Solar is a company that provides a comprehensive management service for the development, design, production, and export of aluminum solar mounting system in Xiamen City, Fujian Province, China. We provide environmentally friendly solar mounting system with advanced technology and attentive service. We are able to propose and provide competitive and high quality components to meet the needs of our customers.



Humility, Diversity, Teamwork



- ◆ Sales of more than 1GW in total in the Japanese market, in the notification of construction plans for special high value projects. Possible to even explain to the safety supervision department.
- ◆ Based on JIS C8955-2017, our design is strict and we provide high-strength products.
- ◆ We have our own warehouse in Japan, so we can respond to any situation such as urgent parts distribution.
- ◆ 10-year quality warranty and 20-year after-sale service.

Factory



Office



Manufacturing Tools



Production process



1.Raw material



2. Tools



3.Melt



4.Extrusion



5.Strecthing



6. Aging furnace



7.Oxidation



8. Inspection



9.Punching



10.Pre-assembly



11. Packing



12. Finished Products

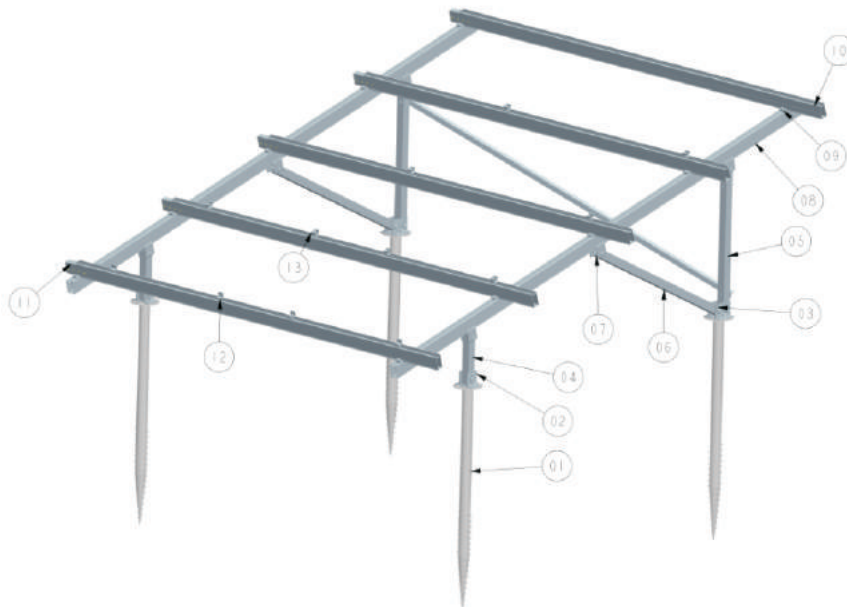


13.Warehouse



14. Shipment

GROUND MOUNTING SYSTEM

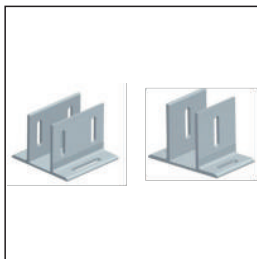


Cap

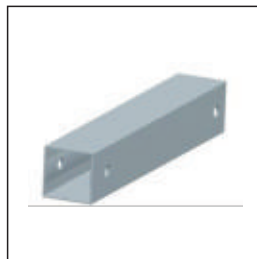
COMPONENTS



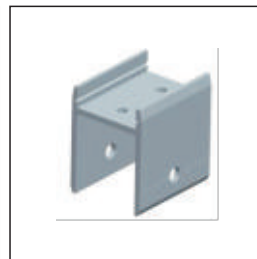
1. Ground Screw



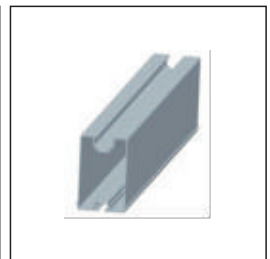
2.3. Base



4. Front Leg
5. Back Leg
6. Square Pipe



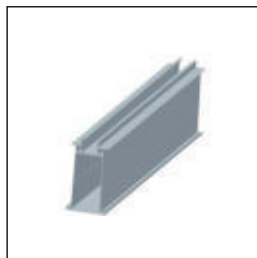
7. H Shape Clamp



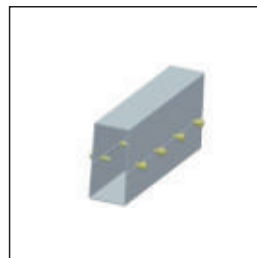
8. Beam



9. Rail Clamp



10. Rail



11. Rail Connector



12. End Clamp



13. Middle Clamp

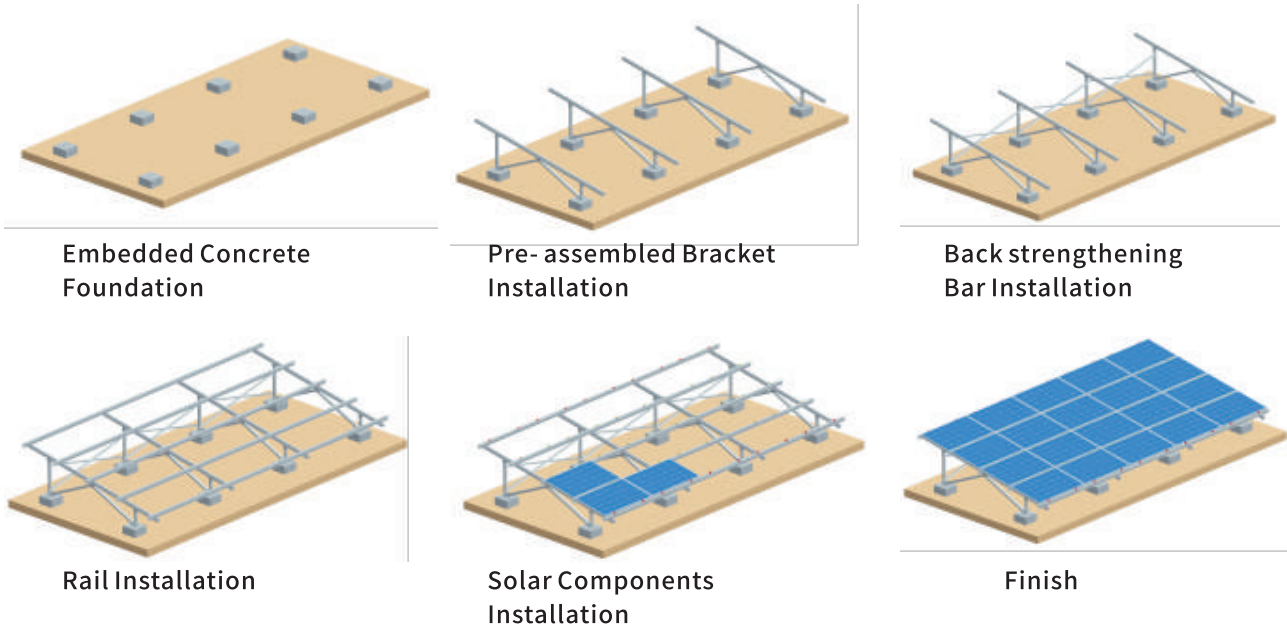
AII-ALUMINUM GROUND MOUNTING SYSTEM(CONCRETE)

TECHNICAL INFORMATION

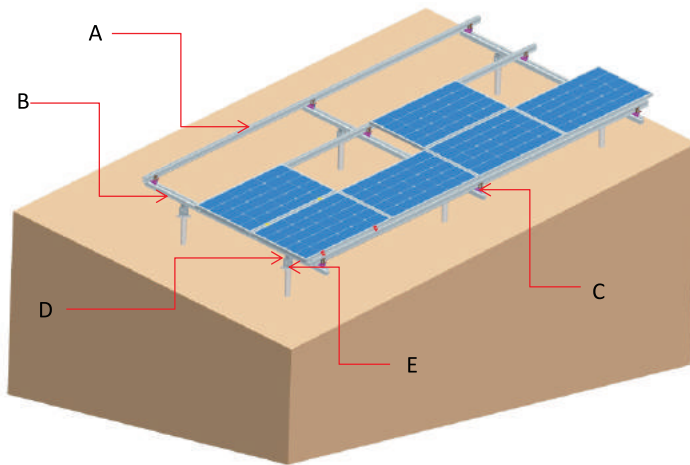


Wind speed: 46m/s
Snow load: 1.4KN/m²
Tilt Angle: 0-60°
Material: AL6005-T5
 High corrosion resistance, high temperature resistance

INSTALLATION



East-west, north-south angle-adjustable Mounting System

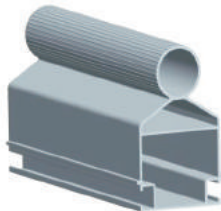


TECHNICAL INFORMATION

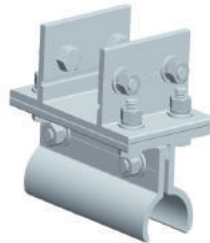
Wind speed:	46m/s
Snow load:	1.4KN/m ²
Tilt Angle:	5-45° 0-30°
Material:	AL6005-T5
Service life:	20 years



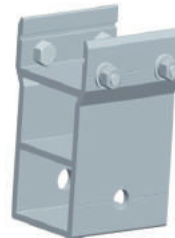
Rail



Beam



East-West Angle adjustable clamp



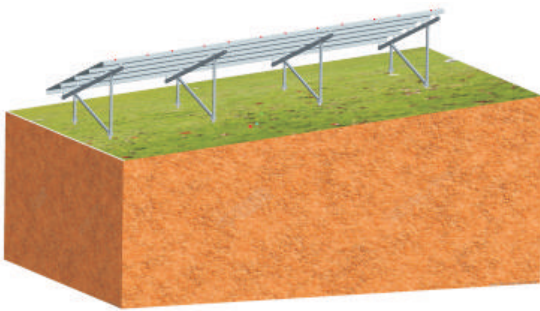
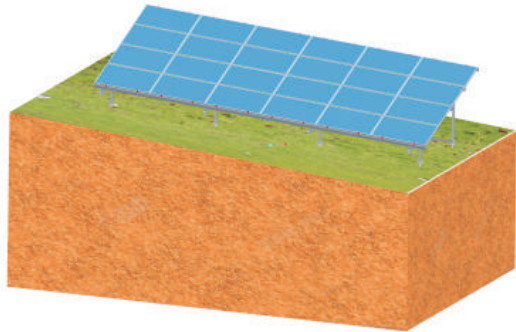
Adjustable clamp



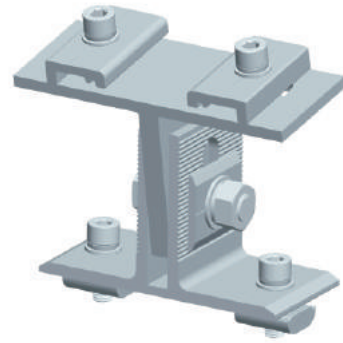
Base



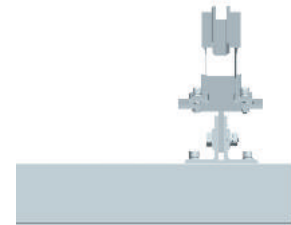
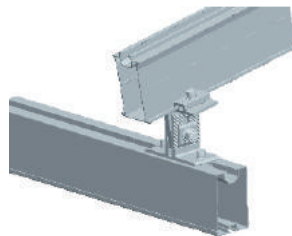
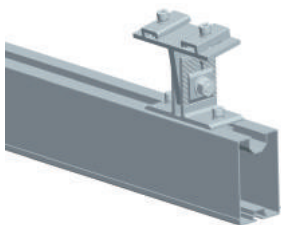
East-West Angle Adjustment Mounting System



East-West Angle Adjustment Fittings



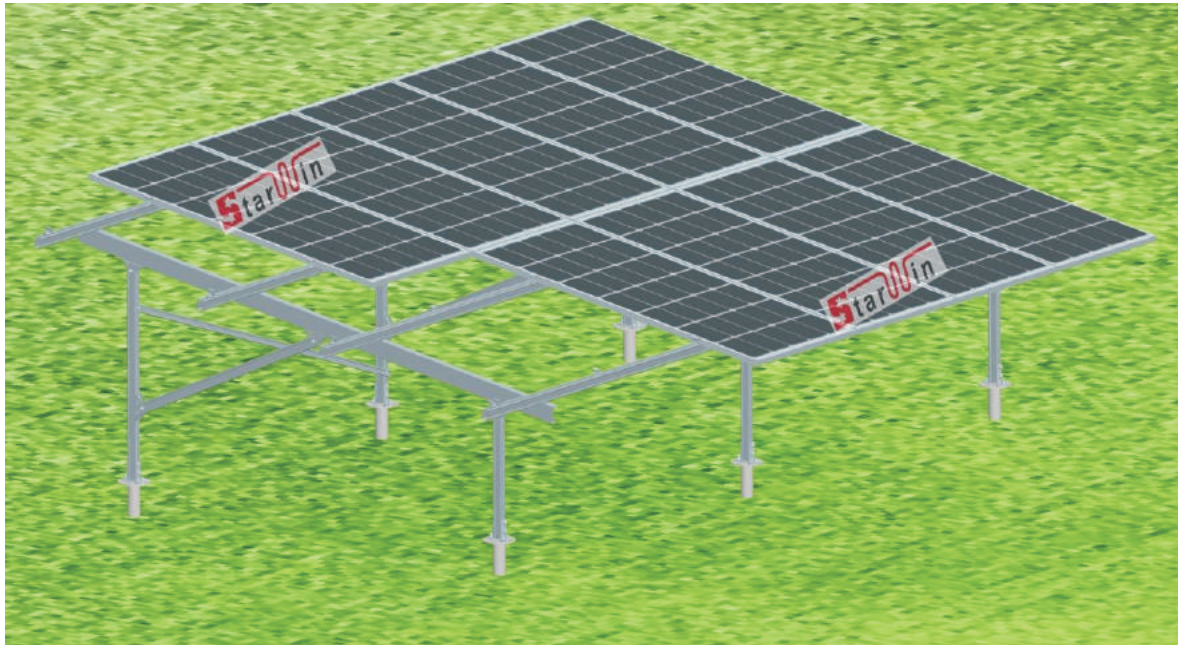
Product Description:
Applicable location: Sloping ground (with east-west slope)
Features: Can be mounted on a 0-60degrees east-west slope



Adjustment of the set-up table performance



ZAM Solar ground mounting system



Beam & tube



Rail



Rail connector



Middle clamp



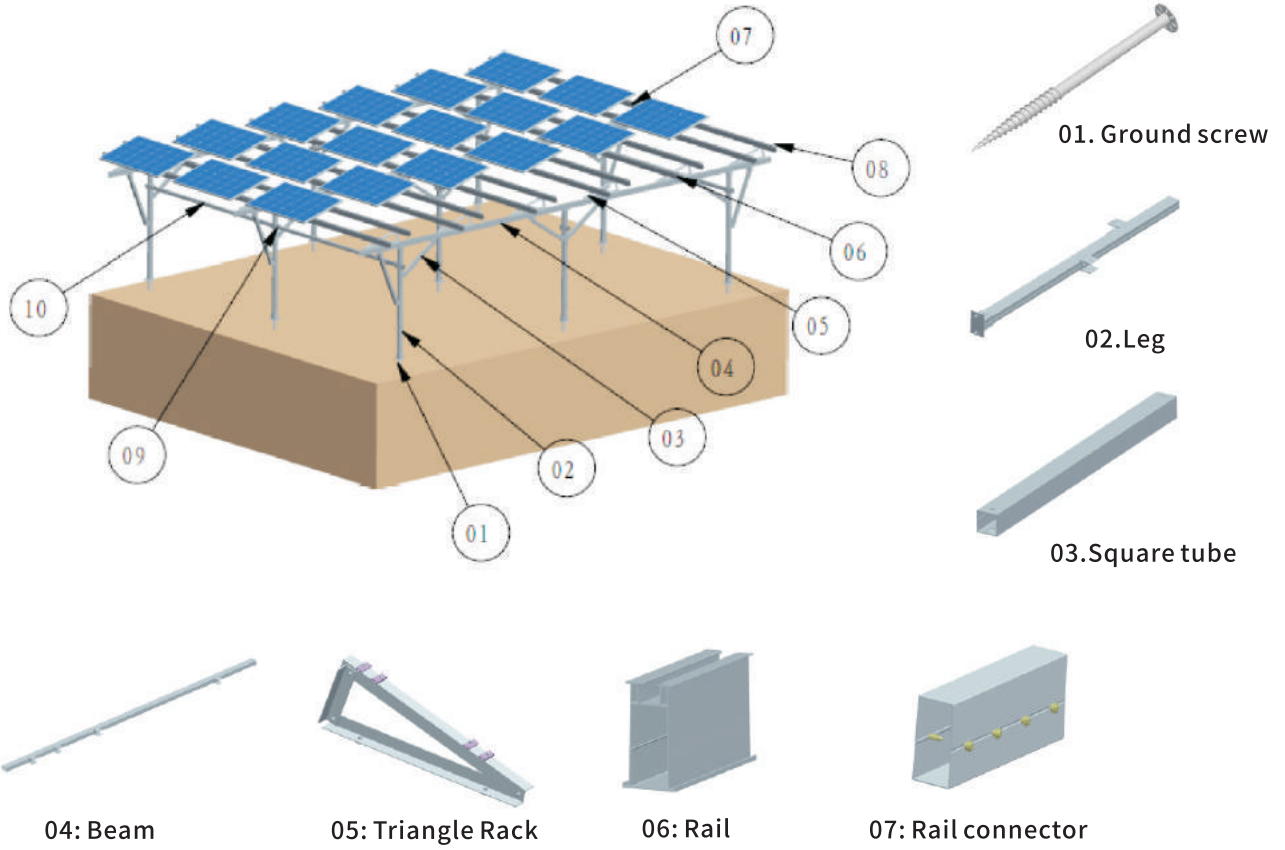
End clamp

Features of the ZAM system

1. Highly corrosion resistant, 10-20 times more resistant than galvanized
2. Lower cost, 5%-15% lower than aluminium
3. Excellent processing performance
4. Long-lasting and durable, with a life expectancy of over 30 years
5. Adjustable thickness and melt galvanisation

The type of system	Solar ground mounting system
Surface treatment	Galvanized
Wind load	60m/s
Snow load	1.4KN/m ²
Material	ZAM
Guarantee	10 years

Solar farm system



Solar farm project site



Waterproof Solar Carport

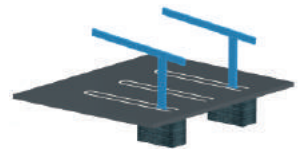
Step 1: The main structure is fixed on the pre-embedded bolts of concrete ballast and stands up.



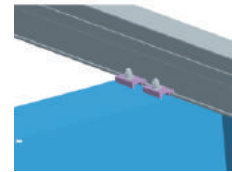
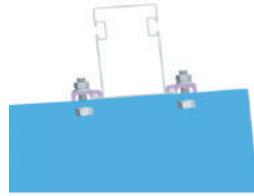
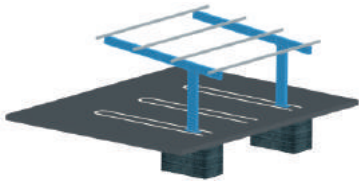
8-M20*65 external hexagonal screws



8-M20*500L type pre-embedded bolts

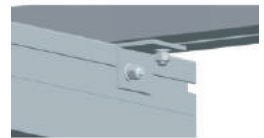
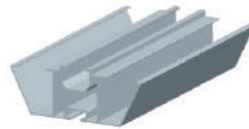
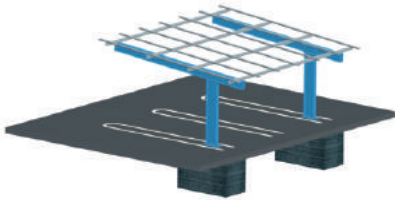


Step 2: Fix the cross rails on the main structure (load bearing beam).



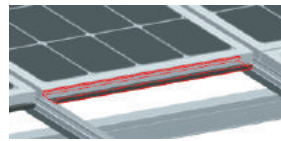
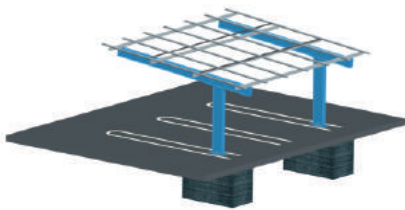
Cross rails Installation

Step 3: Fix the waterproof rails on the cross rails.



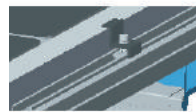
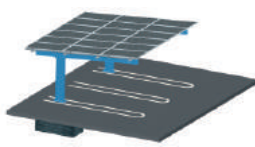
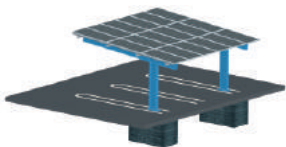
waterproof rails fixing clamps

Step 4: Place the water sinks on the waterproof rails.



water sink

Step 5: Fix the solar panels on the waterproof rails.



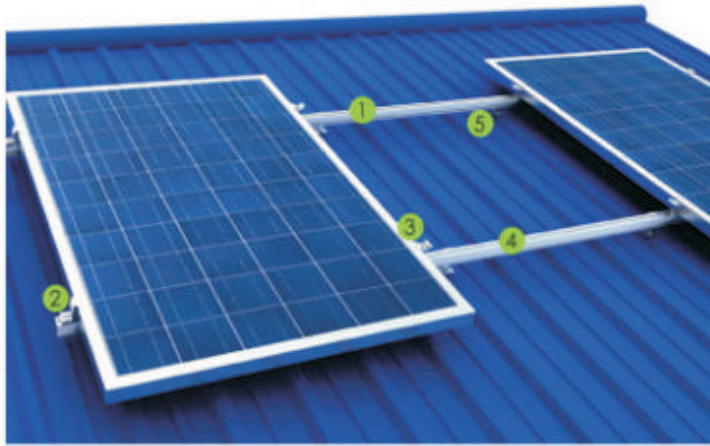
End clamp Installation



Middle clamp Installation



Mental roof mounting system



1.Rail



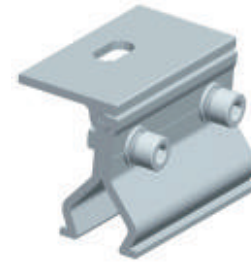
2.End clamp



3.Middle clamp

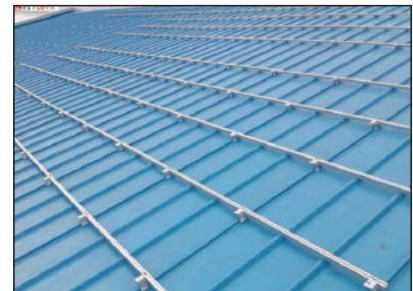
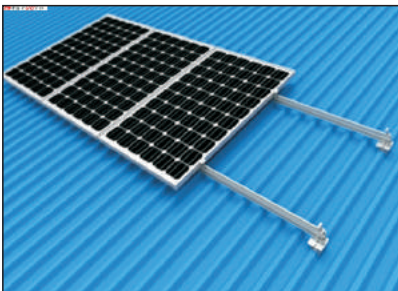
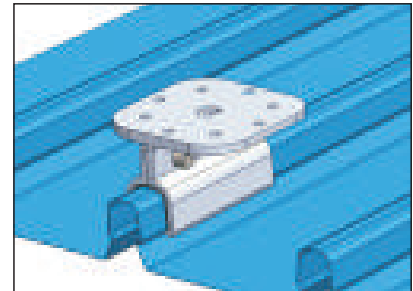
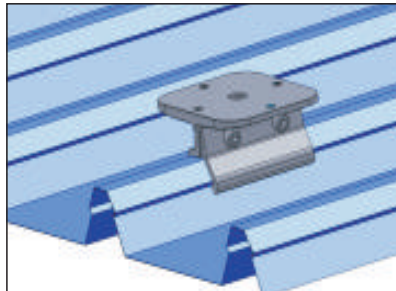


4.Rail connector

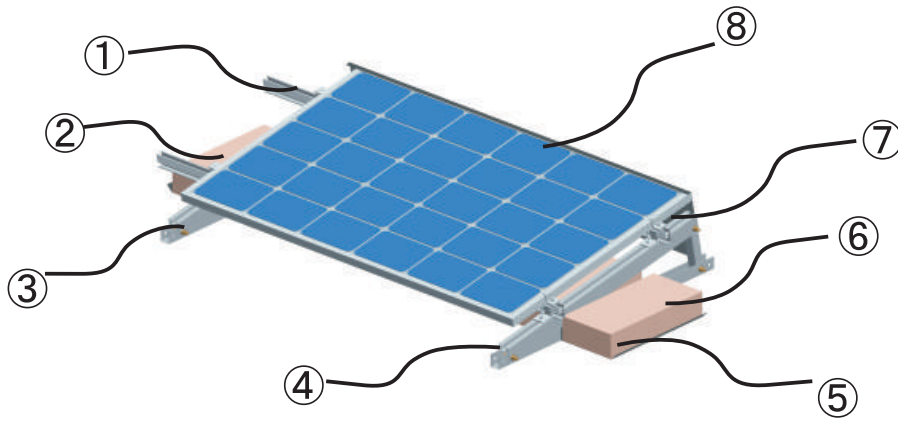


5.klip Lock

Installation drawings



Flat roof mounting system

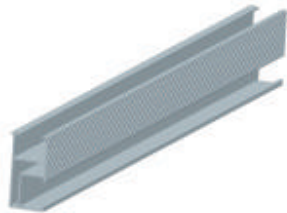


Description: Use the weight of the concrete pier and use the land roof to give support for fixing.

Main component



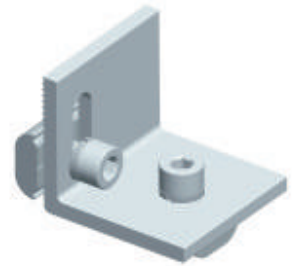
1. Middle clamp



2. Rail



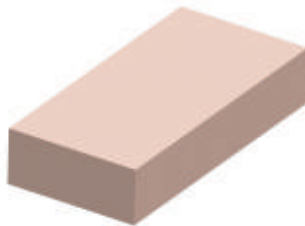
3. Triangle Rack



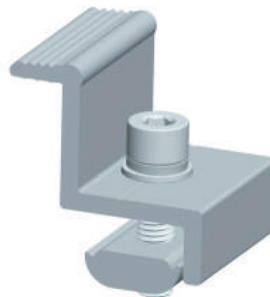
4. Rail clamp



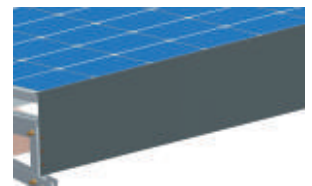
5. Concrete carrier



6. Concrete block

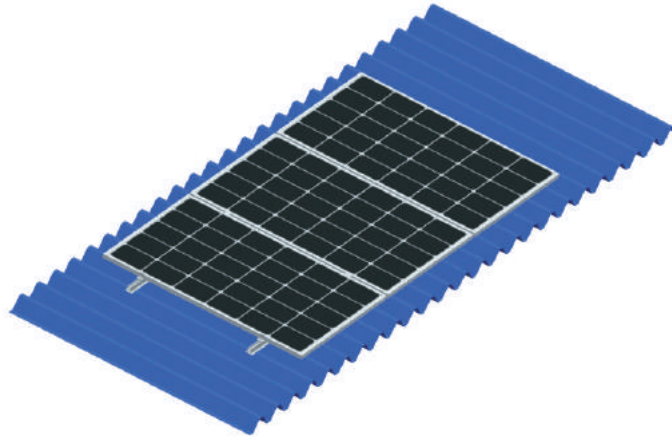


7. End clamp



8. Rear plate

Metal Roof short rail Solar Mounting System



Short Rail



Middle clamp



End clamp

Metal short rail Roof Mounting

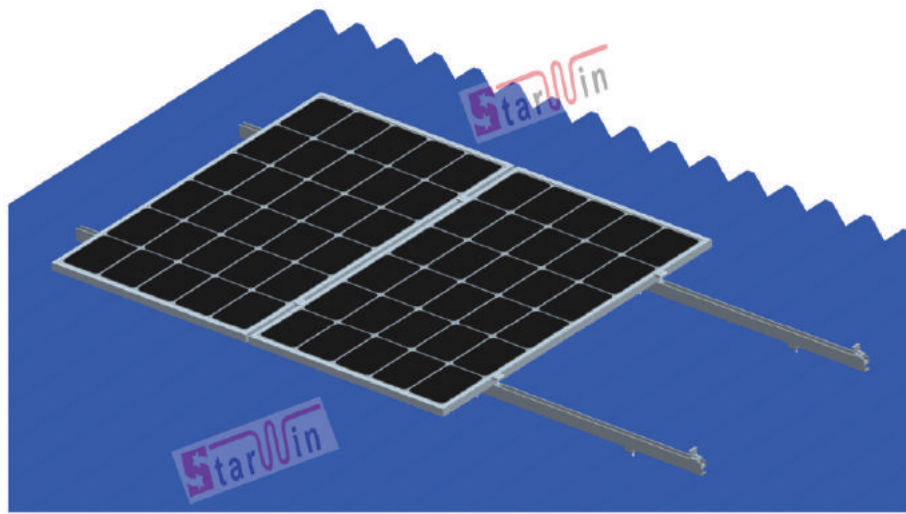
This is a new rail-less mounting system for roofs, and even had to throw some competitors off its demo roof to prevent them from reverse-engineering the rail-free residential solar mounting solution on the spot.

Eliminating rails for residential composite and tile roofs promises project savings on the unavoidable costs of rail mounting systems, including inventory, logistics, shipping and installation labor. and rail-free solar Mounting systems are priced at or below traditional rail systems so installers can convert these project savings into lower total installed costs.

rail free solar mount is designed for trapezoid and corrugated sheet metal roofing enabling you to install without rails.

Mount Type	Metal Roof Solar Short Rail Mounting Systems
Applicable Site	Metal Rooftop
Applicable Module	Framed or Frameless Panel
Module Orientation	Landscape or Portrait
Wind Load	42m/s
Snow Load	1.4kn/m2
Material	Aluminum Alloy
Warranty	10 years

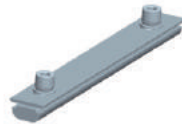
Metal Roof Solar Mounting System



L feet



Rail



Rail connector



Middle clamp



End clamp

Metal Roof Mounting

Solar Metal Roof Mounting System is designed for residential and commercial applications. We design the clamps according to the rooftop profile and size to make sure enable surprisingly quick and easy installation for every roof. Outstanding quality of aluminum ensure the most durable brackets.

Metal roof mount system, accommodating a wide range of modules framed or frameless, is suitable for most types of metal roofs. With innovative rail and module, metal roof mount enables significantly faster and easier installation than others.

Please choose the suitable solar mount for your roof or tell us your roof shape and we'll pick up the suitable one for you.

Mount Type	Metal Roof Solar Panel Bracket
Applicable Site	Metal Rooftop
Applicable Module	Framed or Frameless Panel
Module Orientation	Landscape or Portrait
Wind Load	42m/s
Snow Load	1.4kn/m ²
Material	Aluminum Alloy
Warranty	10 years

Tile Roof Solar Mounting System



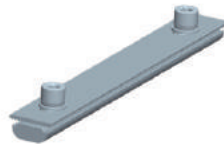
End clamp



Middle clamp



Rail



Rail connector



Tile hook

Pitched Tile Roof Mounting

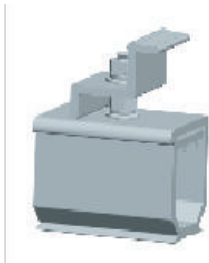
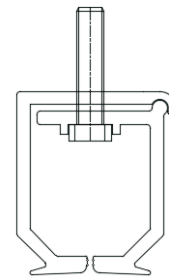
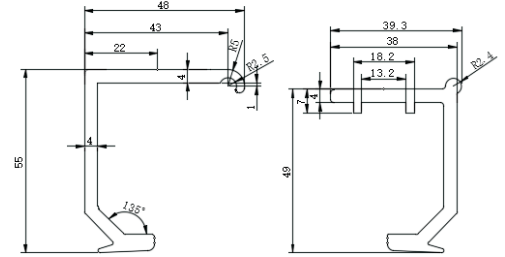
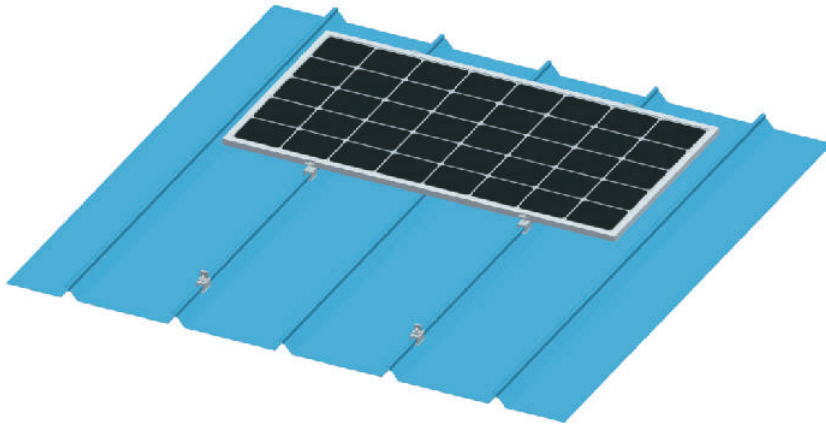
Solar Tile Roof Mounting System is designed for residential and commercial applications. We design the clamps according to the rooftop profile and size to make sure enables surprisingly quick and easy installation for every roof. Outstanding quality of stainless steel and aluminum ensure the most durable brackets.

Tile roof mount system, accommodating a wide range of modules framed or frameless, is suitable for most types of roof with different roof hooks. With innovative rail and module, tile roof mount enables significantly faster and easier installation than others.

Please choose the suitable clamp for your roof or tell us your roof shape and we'll pick up the suitable one for you.

Mount Type	Tile Roof Solar Panel Bracket
Applicable Site	Tile Rooftop
Applicable Module	Framed or Frameless Panel
Module Orientation	Landscape or Portrait
Wind Load	42m/s
Snow Load	1.4kn/m ²
Material	Aluminum Alloy And Stainless Steel 304
Warranty	10 years

Metal Roof Solar Mounting System



End clamp+Kliplok



Middle clamp+Kliplok

Metal Roof Solar kliplok Mounting System

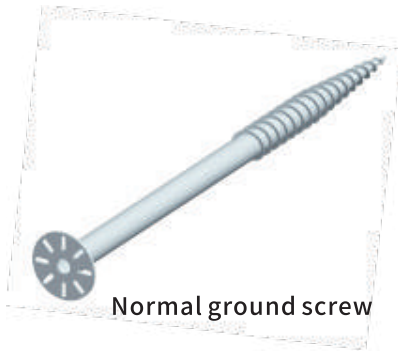
Solar Metal Roof Kliplok Mounting System is designed for residential and commercial applications. No rails for this mounting structure.

Metal roof mount system, accommodating a wide range of modules framed, is suitable for most types of metal roofs.

This kind of roof mounting enables significantly faster and easier installation than others.

Mount Type	Metal Roof Solar Kliplok Mount Structure
Applicable Site	Metal Rooftop
Applicable Module	Framed Panel
Module Orientation	Landscape or Portrait
Wind Load	42m/s
Snow Load	1.4kn/m2
Material	Aluminum Alloy
Warranty	10 years

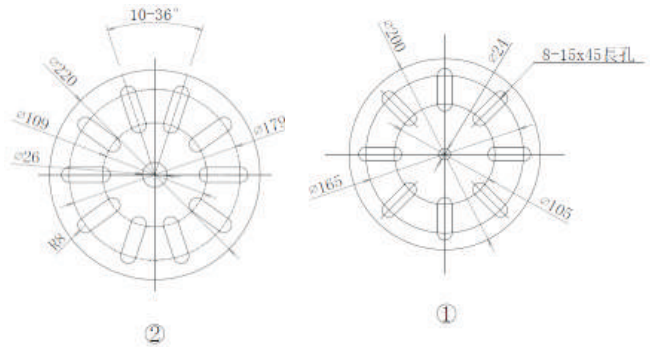
Ground screw type



Surface treatment: hot dipped galvanized
 Diameter: 76mm
 Length: 1200-3500mm

Types of flanges

Diameter	Thickness	Fc KN	Ft KN	Fh KN
76	3.0	32.00	20.00	8.5

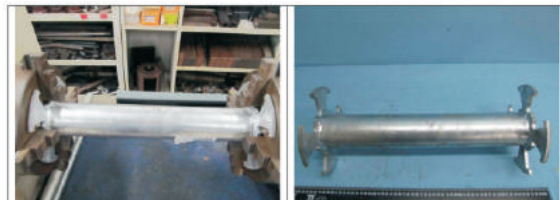


| Fc | Ft — Fh



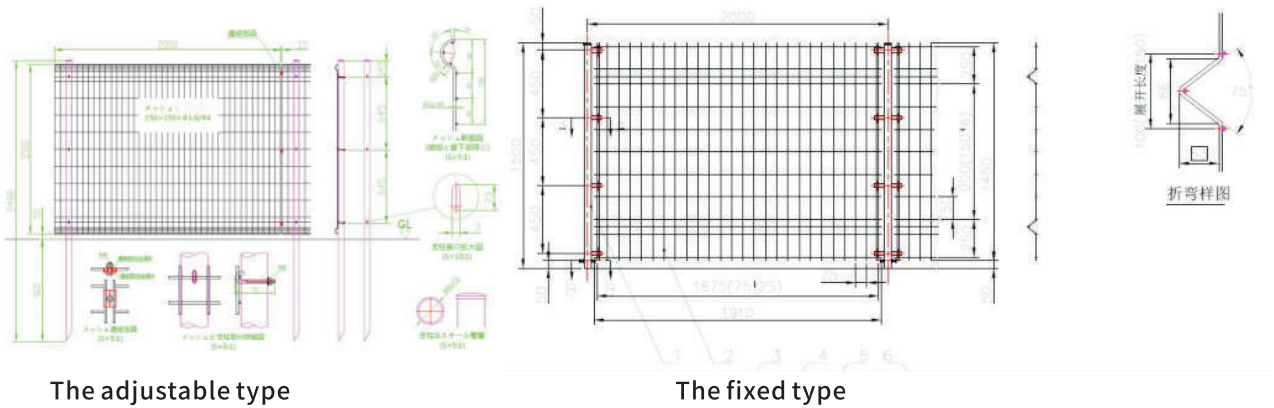
Fc: Compressive force
 Ft: Tensile force
 Fh: Horizontal force

Test report



Solar system protection equipment

Fence



The adjustable type

The fixed type



Uses of the fence

1. Keep children and animals away
2. The presence or absence of a fence affects the insurance premium when insuring solar systems
3. Japanese law requires fencing for solar power installations of 50kw or more

Fence project site



Weed mat

Product	One layer of weed mat	Two layer of weed mat
Picture		
Material	PET+UV	PET+EVA+UV
Colour	Green	Surface painted black
Specification	W50000mm+H2000mm	W25000mm+H2000mm
g/m ²	250	550
Durable years	About 3-5 years	About 5-10 years
Applicable place	Solar power stations, residential, farmland	

characteristic

① Shading rate (above 99.9%), prevent weed growth

The weed control film with high shading rate can inhibit photosynthesis and make the weeds under the film wither and eventually disappear.

② Polyester is being used.

Polyester is resistant to heat and UV degradation, but polypropylene and polyethylene are weak against heat and UV degradation. The material used makes a difference in the service life.

③ The density is high, the eyes are tiny, and even super-strong weeds cannot penetrate.

④ Because it has moderate permeability, it allows rainwater to pass through.

⑤ Eco-friendly material.

Pin

* Very popular for strength

① Made of PP (contains iron)



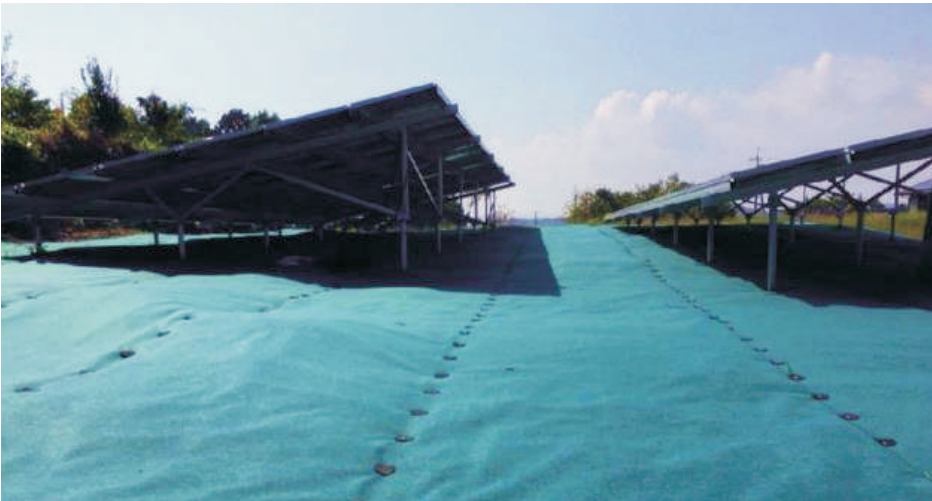
② U type iron (galvanized) + EVA



Packaging、 Container loading



Construction photo



Notes

- Remove grass roots and cut turnips before construction.
- Protect the top of the holding pin with tape, etc.
- If the sheet is laid without leveling the unevenness, soil and water will accumulate and grass will grow.
- Please ensure 15~20cm of overlapping sheets.
- Use 1.5 to 2.5 pins per square meter as a guide.

Floating Mount Systems



Floating Solar System is solar plant built on water areas in order to solve the huge land occupation of traditional ground solar system.

Floating solar is expected to increase in popularity as time goes on. Floating solar also referred to as a floating solar array or floating solar farm, refers to an array of photovoltaic panels on a structure that floats on a body of water, typically a reservoir or lake or sea.

Support floating solar panels typically have walkways that give workers access to perform maintenance.

The use of floating solar panels has a number of economic benefits when compared to relying on traditional solar panels. Floaters are growing in popularity in areas that have limited land space, such as islands, to use for capturing solar energy. Underutilized areas such as reservoirs can become very productive power stations. The possibilities are endless.

Mounting System Type	Floating Solar Mounting System
Max Wind Speed	118.8 km/h
Material	HDPE Plastic
Tilt Angle	5 or 15 degrees
Water Flow Speed	≥1m/s
Weight	11.3±0.4 kg
Size (Sub-floater A)	1000X500X200 mm
Weight	5.3±0.4 kg

Actual Project In Japan

Project references



Okayama Kanaehara City



Hokkaido Tomakomai City



Nagasaki Tomo Nagasaki City



Miyagi Tokakuda City



Mie Kanae Shima City



Fukui Prefecture Sabae City



Tottori City Agricultural Sharing Mounting System



Kobe Roof Mounting System



Makinohara City Shiroi Agricultural Sharing Mounting System



Ibaraki Canal Kamisu City



Fukui Awara City



Shizuoka Kabanematsu City.



Hyogo Prefecture Tanba city 1.7mw Bottom Lock



Suzuta Solar Sharing Mounting System



Chiba Prefecture Solar Sharing Mounting System 1.3MW



**Hyogo and Tanba City 1.7MW
Bottom Lock**



Shizuoka Fukuroi City



**Hyogo Drain Sanyo Onoda City
Bottom Lock**



**Hyogo Kasekiho-gun
Multi-stage mounting system**



**Genshima Dingwu City
Single Pipe Foundation**



**Ibaraki
Super High GL**

Other Projects

Project references



Singapore 1.39MW



China 530KW



Singapore Roof 870KW

Certificates





Contact us
Contact us

WEBSITE: www.starwinsolar.com

E-MAIL: sales@starwinsolar.com

TEL: +86-592-2076010

Xiamen Starwin Solar Technology Co.,Ltd

Add: No. 25 Donggang South Road, Huli District ,Xiamen City,
Fujian Province , China